

2021-06-08

Battery Management System Ver3.5

Function | System Control | Data record | Command Test | Help? | COM3 | 9600 | **Disconnected.....**

Pack 01 Pack 02 Pack 03 Pack 04 Pack 05
 Pack 06 Pack 07 Pack 08 Pack 09 Pack 10
 Pack 11 Pack 12 Pack 13 Pack 14 Pack 15
 Select ALL ALL Clear Battery pack Selector

Protocol Parameter | **Setting** | Connect | Disconnect | Log | Interval(s) 1 | Refresh

Pack #01

Pack #01

Total voltage: --- TEMP1: --- TEMP4: ---
 Total current: --- TEMP2: --- TEMP5: ---
 TEMP3: --- TEMP6: ---

Max-voltage: --- MOSFET TEMP1: ---
 Min-voltage: --- MOSFET TEMP2: ---
 Mean-Voltage: ---

Core Voltage(V) ■

Pack information

Discharging Charging
 Current-limiting Warning
 Equilibrium _____

Real-time recording

Save As:

Recording

Start Time:

End Time:

Device Info

Manufacturer: ---
 Pack_Total: ---
 Component: ---
 HW version: ---
 SW version: **Ver 0.7**

Real-time early warning

Alarm type	Pack number	Core number	DateTime
*			

1.Open App

2021-06-08

Battery Management System Ver3.5

Function | System Control | Data record | Command Test | Help? | COM3 | 9600 | **Disconnected.....**

Pack 01 Pack 02 Pack 03 Pack 04 Pack 05
 Pack 06 Pack 07 Pack 08 Pack 09 Pack 10
 Pack 11 Pack 12 Pack 13 Pack 14 Pack 15
 Select ALL ALL Clear Battery pack Selector

Protocol Parameter | **Setting** | Connect | Disconnect | Log | Interval(s) 1 | Refresh

Pack #01

Protector type: **BWEM-601** Protocol version: Ver 1.0

RS485 USB-CAN

COM Setting

PortName: COM3 Communication transmissi

BaudRate: 9600 Starting bit 1 bit
Data bit 8 bits
Stop bit 1 bit
No parity checking

Device addr: 0x 10
Address should be completed in 16

Configured communication parameters

PortName: ---
BaudRate: ---

CAN setting

CAN type: DEV_USBCAN

Filter: ALL

Baudrate: 250Kbps

Mode: Normal

Initialization

Pack information

Discharging Charging
 Current-limiting Warning
 Equilibrium _____

Real-time recording

Save As:

Recording

Start Time:

End Time:

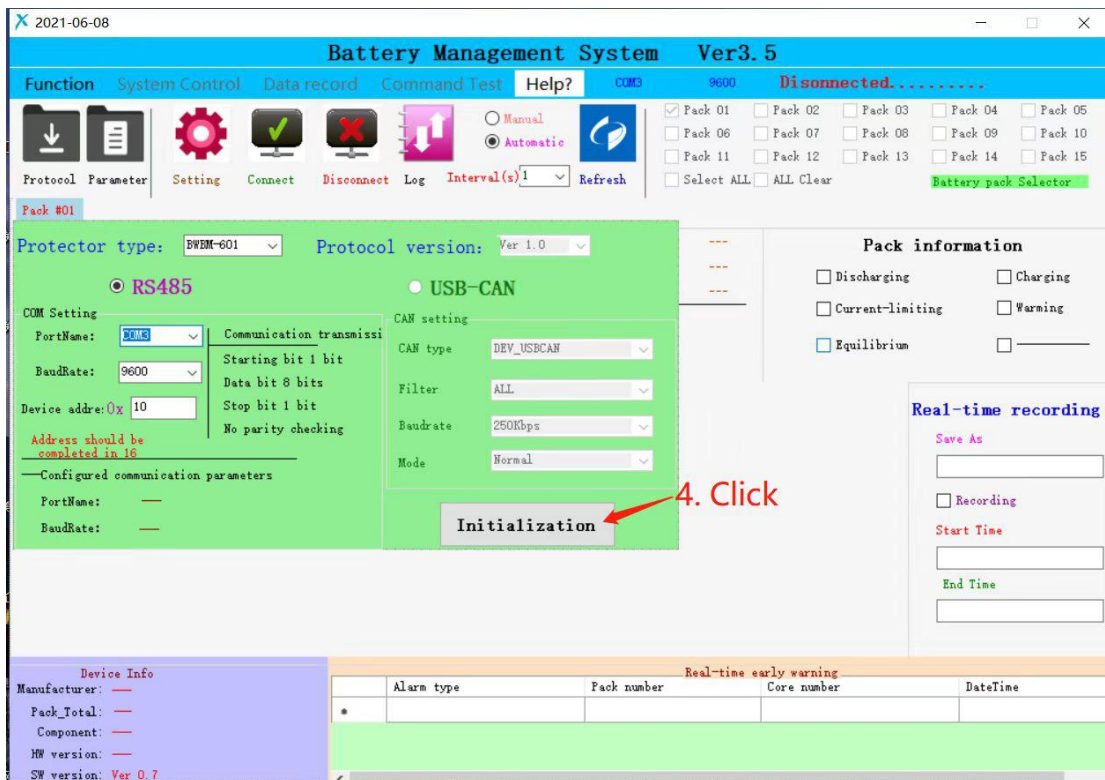
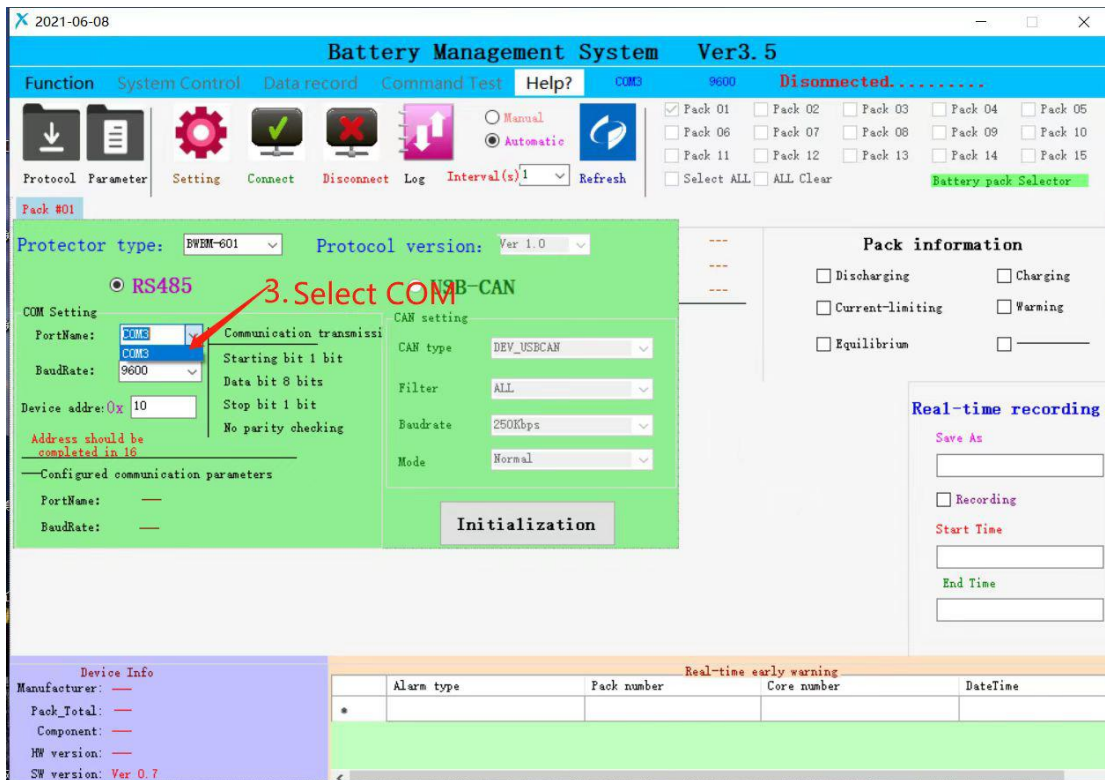
Device Info

Manufacturer: ---
 Pack_Total: ---
 Component: ---
 HW version: ---
 SW version: **Ver 0.7**

Real-time early warning

Alarm type	Pack number	Core number	DateTime
*			

2.click



2021-06-08

Battery Management System Ver3.5

Function System Control Data record Command Test Help? COM3 9600 Serial port initialization complete

Pack 01 Pack 02 Pack 03 Pack 04 Pack 05
 Pack 06 Pack 07 Pack 08 Pack 09 Pack 10
 Pack 11 Pack 12 Pack 13 Pack 14 Pack 15
 Select ALL ALL Clear

Pack #01

Pack #01

Total voltage: ---
Total current: ---

Total : ---
 Residual: ---
 Circle : ---

Max-voltage: ---
 Min -voltage: ---
 Mean-Voltage: ---

TEMP1: --- TEMP4: ---
 TEMP2: --- TEMP5: ---
 TEMP3: --- TEMP6: ---
 MOSFET TEMP1: ---
 MOSFET TEMP2: ---

Pack information

Discharging Charging
 Current-limiting Warning
 Equilibrium _____

Real-time recording

Save As

Recording

Start Time

End Time

Device Info

Manufacturer: ---
Pack_Total: ---
Component: ---
HW version: ---
SW version: Ver 0.7

Real-time early warning

Alarm type	Pack number	Core number	DateTime
*			

5.Click

2021-06-08

Battery Management System Ver3.5

Function System Control Data record Command Test Help? COM3 9600 Connected...

Pack 01 Pack 02 Pack 03 Pack 04 Pack 05
 Pack 06 Pack 07 Pack 08 Pack 09 Pack 10
 Pack 11 Pack 12 Pack 13 Pack 14 Pack 15
 Select ALL ALL Clear

Pack #01

Pack #01

Total voltage: 75.965V
Total current: 0 A

Total : 45 Ah
 Residual: 24.3 Ah
 Circle : 1

Max-voltage: 3.306V
 Min -voltage: 3.298V
 Mean-Voltage: 3.303V

TEMP1: 24 °C TEMP4: ---
 TEMP2: 23 °C TEMP5: ---
 TEMP3: 23 °C TEMP6: ---
 MOSFET TEMP1: 23 °C
 MOSFET TEMP2: 24 °C

Pack information

Discharging Charging
 Current-limiting Warning
 Equilibrium _____

Real-time recording

Save As

Recording

Start Time

End Time

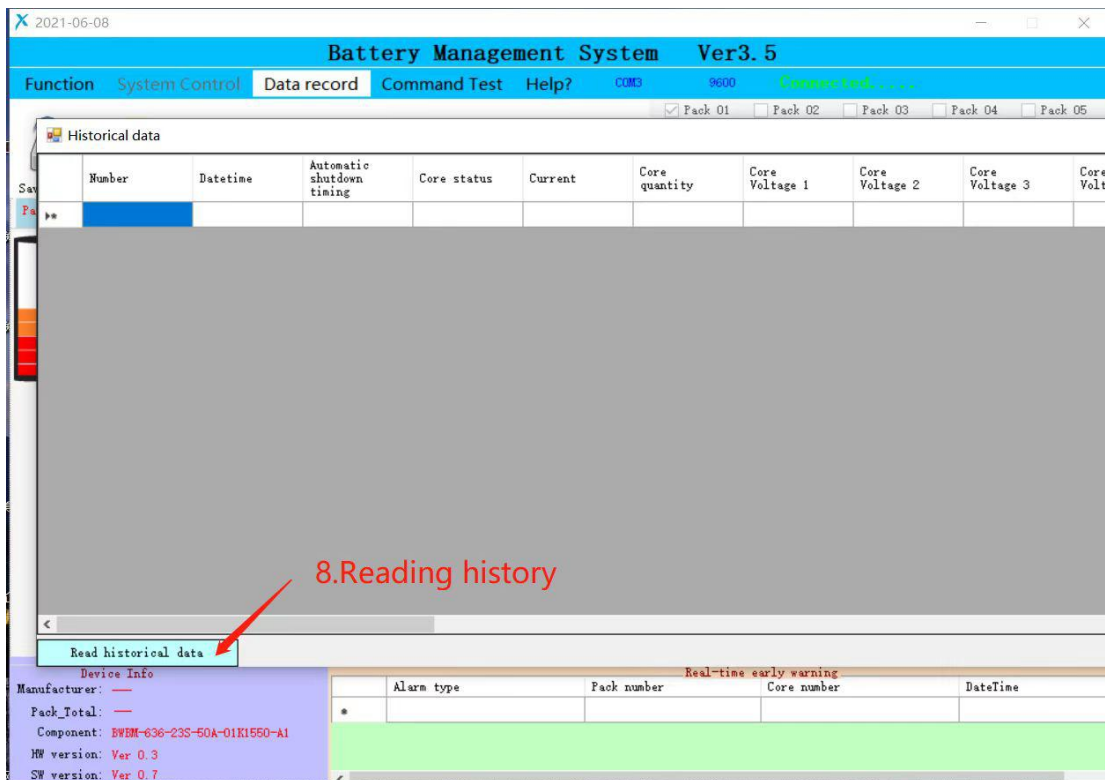
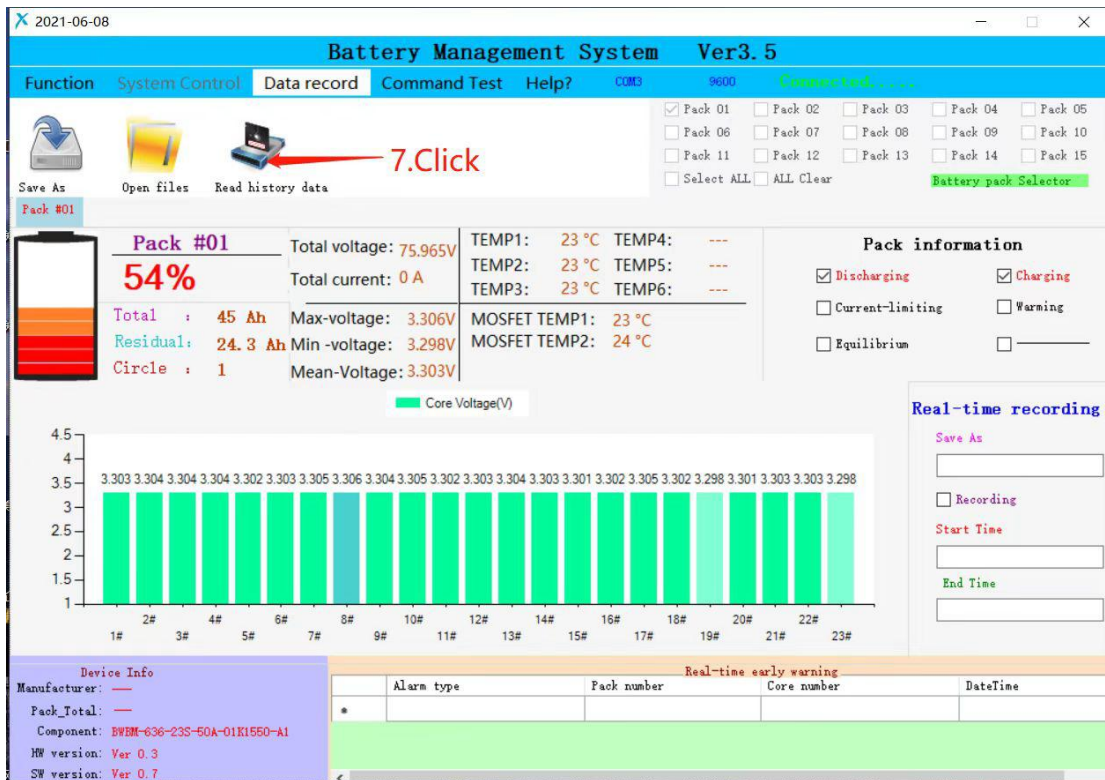
Device Info

Manufacturer: ---
Pack_Total: ---
Component: BWM-636-23S-50A-01R1550-A1
HW version: Ver 0.3
SW version: Ver 0.7

Real-time early warning

Alarm type	Pack number	Core number	DateTime
*			

6.Click



Dear customer, please download the 3.4 PC program and use the communication cable, there will be a history record after reading it out, please download this according to the operation(9 steps) and send screenshot of each step of us for evaluation, thanks.

Historical data

Number	Datetime	Automatic shutdown timing	Core status	Current	Core quantity	Core Voltage 1	Core Voltage 2	Core Voltage 3	Core Voltage 4	Core Voltage 5	Core Voltage 6
*											

9.Export data

Read historical data

Export data

