



ML8D 12V 250Ah(20hr)

Rechargeable AGM Lead Acid batteries. Battery is completely sealed and is maintenance-free, leak proof, and can be used in any position.

General Features

- Absorbent Glass Mat (AGM) Deep Cycle technology high cycle applications.
- Computer designed lead, calcium tin alloy grid for high power density
- Long service life, float or cyclic applications
- Maintenance-Free
- Low self-discharge

Dimensions and Weight

Length (mm / inch)	520/20.5
Width (mm / inch)	269/10.6
Height (mm / inch)	203/8.0
Total Height (mm / inch)	208/8.2
Aprox. Weight (kg / lbs)	72.2/159.0
Terminal Type/size	Internal Thread

Performance Characteristics

Nominal voltage	12
Number of cells	6
Nominal Capacity 77° F (25°C)	
100 hour rate	1.80V/cell 269Ahr
20 hour rate	1.80V/cell 250Ahr
10 hour rate	1.75V/cell 245Ahr
5 hour rate	1.75V/Cell 201.5Ahr
1 hour rate	1.60V/cell 162.5Ahr

Self-Discharge

3% of capacity per month at 20°C

Operating Temperature Range

Discharge	-20 to +60°C
Charge	-10 to +60°C
Storage	-20 to +60°C

Max Discharge Current

1100A

Short Circuit Current

4300A

Charge Methods: Constant Voltage Charge 77°F (25°C)

Cycle use

2.40-2.45VPC

Maximim charging current

0.33C 20hr

Temperature compensation

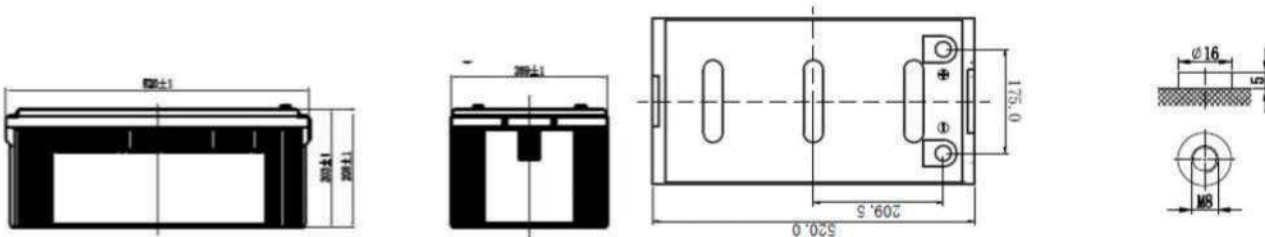
-30mV/°C

Standby use

2.26-2.30VPC

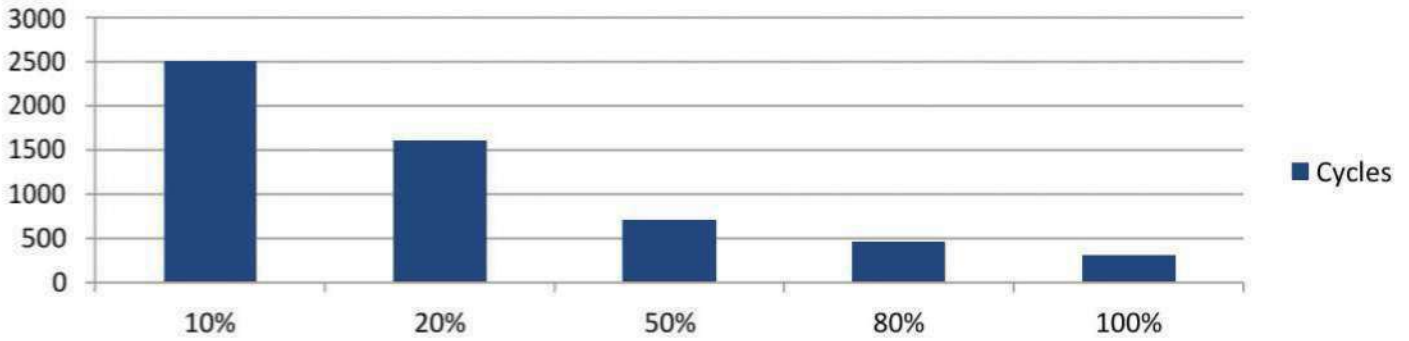
Temperature compensation

-20mV/°C

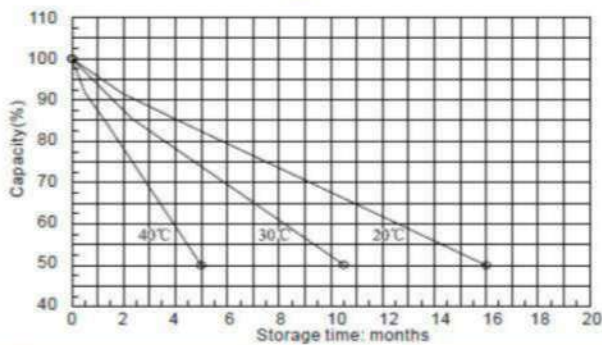


ML8D 12V 250Ah(20hr)

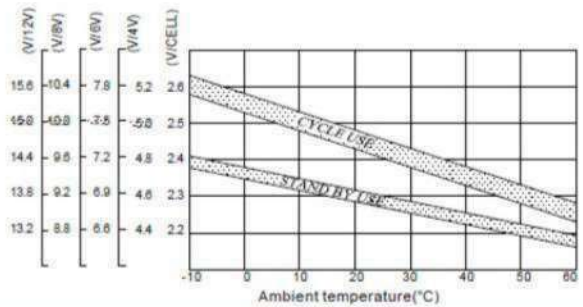
Cycle life DC Models % DOD



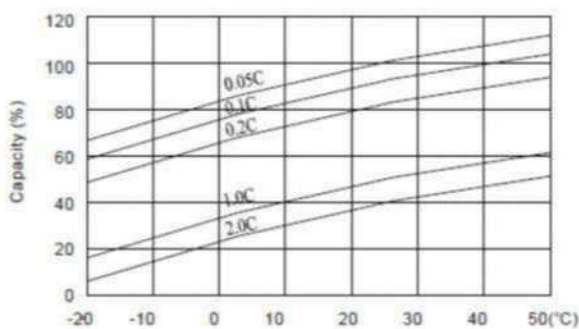
Self-discharge characteristic



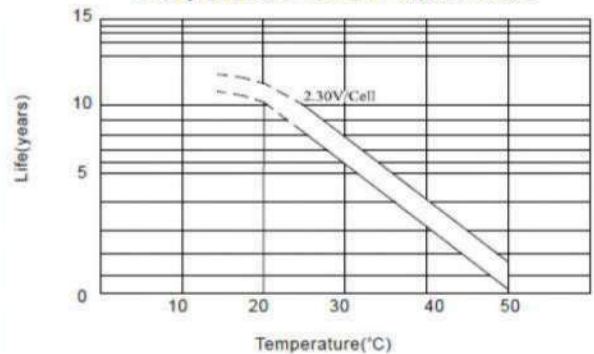
Relationship between charging voltage and temperature



Temperature effects on capacity



Temperature effects on float life



Address: 3775 Park Avenue Unit 3 Edison, NJ 08820

TEL: 855-378-7135 Email: Sales@MightyMaxBattery.com www.mightymaxbattery.com